



Enterprise-grade digital twin solution

for mission critical facilities and remote sites.



Beamo's state-of-the-art hardware and software platform lets you visit the places you cannot go to and collaborate with others, remotely. Capture any space in 360° and create digital twins in few minutes, no expertise required.

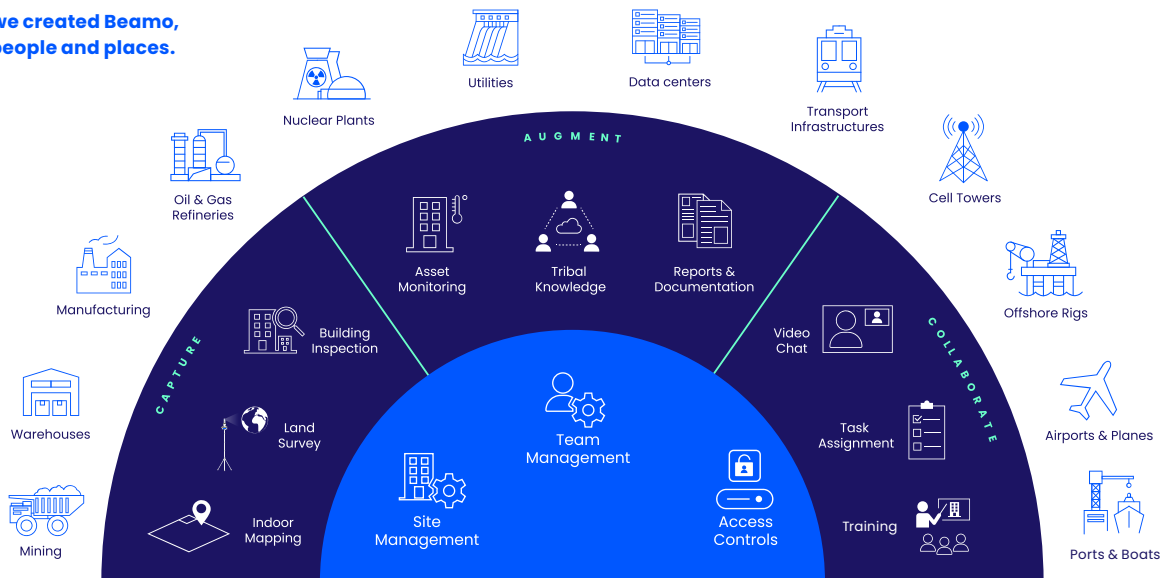
Avoid going onsite with Beamo.

When it comes to managing the lifecycle of mission-critical facilities, there are often no real alternatives. Site surveying teams need to go onsite to perform inspections, monitor work progress, check equipment, or even space occupancy. Now more than ever, "just getting there" has become a challenge for distributed teams.

Digital transformation, often touted as the most evident remedy, is largely perceived as a daunting task where existing solutions often fail to address simple field realities such as strict access protocols, lack of connectivity and unforgiving environments.

Organizations with a large portfolio of distributed sites need simple solutions to capture hard to reach places and share them with all their stakeholders, securely.

That's why we created Beamo, to connect people and places.



Your facilities in the palm of your hands.

- Use Beamo across many industries to reduce onsite visits by 50%
- Map your indoor and outdoor spaces at speed & scale and support ongoing operations without skipping a beat.
- Visualize your entire portfolio in a centralized platform, from anywhere.
- Manage space inventory, improve building resiliency, and reduce the risk of downtime.
- Improve maintenance records keeping and continuity between shifts, and monitor your assets in real time.
- Follow work progress and improve communications between teams, contractors and clients.



With Beamo, we took our first concrete and meaningful step toward visualizing our 150 Data Centers in operation or under construction, worldwide.

Yoichi Taguchi, Senior Manager at NTT Communications.

\$300,000 saved per site per year.

\$10,000 saved per engineer in travel cost.

500 hours inspection time saved per year.

30% time saved onsite.



Site Survey, made simple.

Digital twins are the best way to replace traditional photo reports that can take weeks to create. Creating a digital twin might seem daunting, but we make it easy, fast and fun. Beamo democratizes the power of digital twins with a solution that is ground breaking in its simplicity and scalability. Instead of mobilizing a cross departmental team to run around the world, Beamo empowers anyone available onsite to easily capture indoors and outdoors using a smartphone and a 360° camera.

The Beamo mobile app is your new site survey companion, capture alone or with a teammate, tag and check the results directly.

Available on iOS and Android.



An indoor "GPS" that fits in your pocket.

Indoors, GPS is not reliable. Beamo App uses your smartphone's SLAM* capabilities to locate you as you perform site surveys, wherever you are and wherever you go. This way, each 360 degrees picture is stitched to location, automatically. Beamo makes sure your survey is on the right track by avoiding human errors that could occur with manual positioning.



Capture even the smallest details on the go.

Beamo App lets you attach additional pictures, videos, and other files on the floor plan to document observations and environmental conditions. Annotations, also called Beamo Tags, are directly implemented into the digital twin after upload. Beamo helps you speed up inspections activities by 30% and cut reporting processes by 90%.

*Simultaneous localization and mapping



Beamo Pathfinder

Beamo Pathfinder is a revolutionary mapping device that extends the capabilities of the Beamo app, both indoor and outdoor. Beamo Pathfinder takes over your smartphone as a location tracker so you can map sites 10x bigger with high accuracy (only 1% error margin).

Beamo Pathfinder's modular design makes it simple to clip it on any device (tripod, helmet, car, robot...) to capture without restriction. Our cutting-edge computer vision and AI technology allow Beamo to seamlessly map your site as you walk, drive and capture.

Start



Smartphone Setup

Beamo provides the simplest way to capture your sites. Just clip your smartphone on our Beamo Starter Kit and go.

- Capture up to 1,000 points in a single go.
- Best for spaces under 5,000 sqm.
- Capture, then augment with tags.

Expand



Beamo Pathfinder Setup

Beamo Pathfinder is our most modular approach, with extended mapping capabilities.

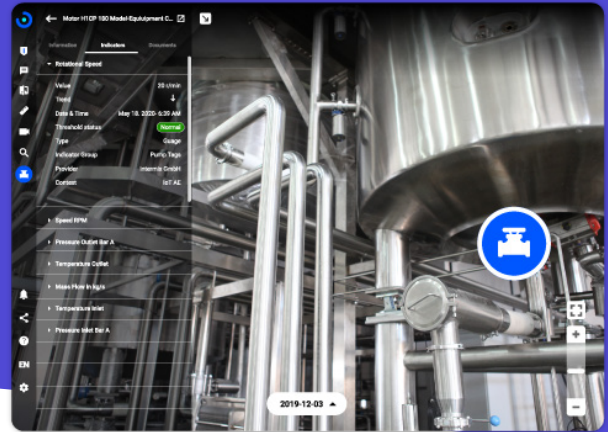
- Capture up to 10,000 points in a single go.
- Best for large spaces up to 50,000 sqm.
- Capture and tag at the same time.

Augment your sites, augment your teams.

Beamo allows you to naturally enhance your digital twins with mission critical data, documentation, and tribal knowledge. From live sensor data and technical manuals to field tips and tricks, Beamo helps you enrich your digital twins with layers of information in one organic platform.

The Beamo Portal makes all your digital twins, sites surveys and curated content accessible in one place, securely.

Available on SaaS, dedicated servers and on-premise.



Curate tribal knowledge and reduce information loss.

Operational teams are the most valuable yet untapped source of critical information. Beamo brings the power of the collective intelligence of your experts and helps you curate their daily know-hows onto your digital twin and make it available for current and future generations of employees. No more lost expertise in the bottom drawer of a retiring manager.

Onboard, train and educate.

Onboarding new team members is tedious and requires repetitive explanations from team leaders (how to access points on the factory floor, where they can find different equipment, etc.). Now every team can create their own knowledge base of videos, training manuals, procedure documents and more, and share it with newcomers for self-paced learning with relevant context.

Beamo - 3D intelligence unleashed.

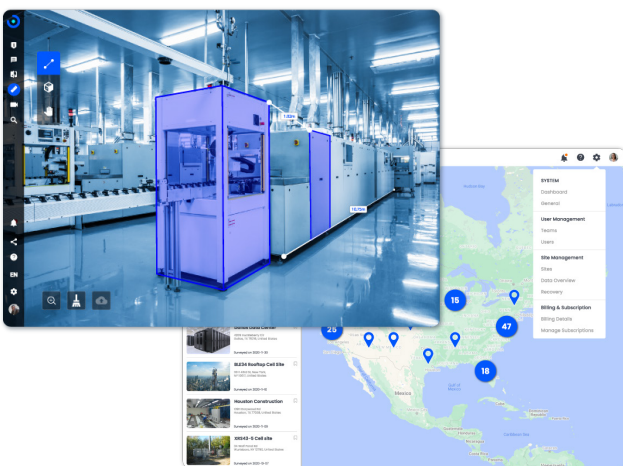
With so much knowledge segmented across different teams and individuals, the challenge is to collect, organize and understand **information that would otherwise be lost with time**. At some point, nobody knows what is going on in those very critical places without physically going there.

Beamo's spatial repository is immersive, intuitive and the single source of truth where 3D intelligence is captured, collectively. By linking data to the places and things it belongs to, Beamo bridges the gap between information, knowledge.

Monitor your assets in real-time.

Beamo's digital twin is a living organism that is constantly changing and growing. By integrating sensor data directly into the digital twin, it is easy to take a pulse of your facility and monitor the health of your assets in real time.

Beamo makes supporting the maintenance and operations for your assets more intuitive. Monitor and prevent potential issues before they occur - all from a simple visual dashboard.



Your portfolio, all in one place.

Beamo Portal opens with an interactive map view of all your sites. Users can dive into their digital twins in two clicks or sort assets using custom labels. Teammates can highlight issues and assign them to those responsible, while keeping an eye on things that matter to them. Each site gets its own passport with editable fields to display general information.

This way, Beamo Portal scales with usage and your content is never misplaced. All sites are under the supervision of a Site Manager that oversees the creation and population of sites as well as the creation of labels. The Site Manager also manages all the floor plans to ensure that the teams on the ground are all using the same information.

Beamo opens the door to your spaces and is where remote spatial collaboration happens.



Beamo Tags

Embed documents directly into the 3D workspace (Images, videos, files...)



Virtual Measurements

Remotely measure the dimensions and volumes of any visible object.



Time Comparison

Compare work progress through time, side-by-side



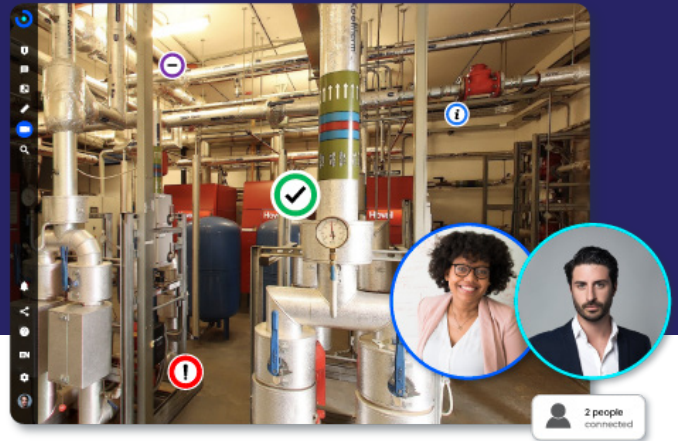
Embedded Tour

Embed a digital twin to a website to showcase a virtual tour of your sites.

Beamo is a Single-Tenant SaaS Solution, meaning each team has a dedicated server and supporting infrastructure. This improves security and stability. Beamo is also deployed on Amazon Virtual Private Cloud (VPC), which provides an isolated virtual environment for better security.

Collaborate as if you were in the same room.

Meet your teammates in your digital twin and collaborate with them like you would in real life. Assign tasks, monitor work progress, and securely share with internal and external stakeholders.



What we solve



Shortage of skilled workforce onsite

Not everybody can be everywhere everytime. Beamo lets you teleport to hard-to-reach places instantly and collaborate with onsite teams.



Poor visibility between onsite/offsite

Beamo helps you reconnect key stakeholders with field realities and lets you document the progress of work as often as you want.



Lack of collaboration in complex projects

Beamo is here to cement your teams together so they share the same vision, and access the same data in one centralized and intuitive portal.

The collaboration end-game

Even at its best, collaboration is hard. Teams need to unlock the flow of information between onsite and offsite, and seamlessly access information from a macro-level (site portfolio) directly to the micro-level (view of the space). Beamo is designed for teams to unify their vision and understanding of their operations and to provide visual support across departments.

From construction to maintenance, the full lifecycle of a building is captured along the way.

Similarly, in manufacturing lines, machines run continuously, whereas maintenance teams run in shifts, creating a need for continuity and work records. Typically, clipboards of papers are placed in front of every machine, and workers tick boxes as tasks are completed. With Beamo, the paper documentation can be replaced with digital documents linked from the database directly into the digital twin and accessible onsite, easily.

So if a picture is worth a thousand words, Beamo's digital twin tells the full story.



Live Share

Guide visitors through a virtual tour of your facilities with live video chat.



Password Protected Sharing

Share your digital twin with external users with customized access levels.



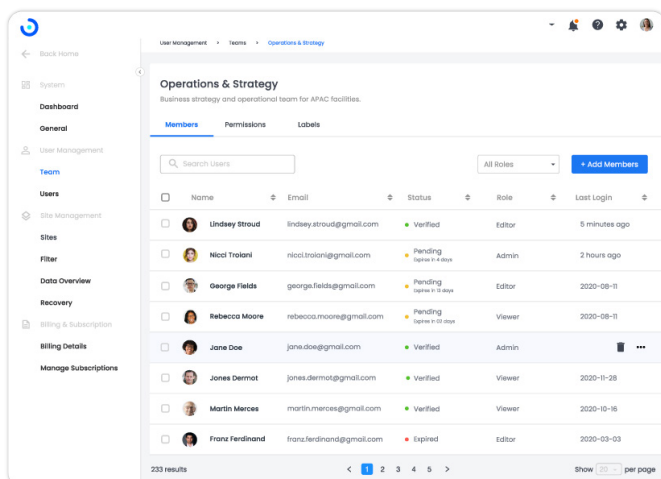
Comments

Notify other team members of specific tasks and get a conversation started.



Tracking Tours

Record an interactive tour of your sites for access protocols and training.



Precise control to match your specific needs

To meet the needs of modern organizations, Beamo incorporates a hybrid of Role-Based Access Control (RBAC) and Attribute-Based Access Control (ABAC) framework. This allows a simple-to-use access control that works with even the most complex use cases.

Enable access to an entire site, a floor or a specific survey with only the information you want to share. Ensure that the right people have the right information at the right time and keep teamwork streamlined by sharing information only within the team. What's more, Beamo lets an unlimited number of users connect to the digital twin and access shared knowledge from anywhere in the world.

Contact Us.

www.beamo.ai

questions@3i.ai

+1(669). 274. 5800