

enerdrape



enerdrape

Enerdrape turns underground
environments into energy suppliers
for the heating and cooling needs
of buildings.

On a mission to unlock the energy potential that lies in our undergrounds.

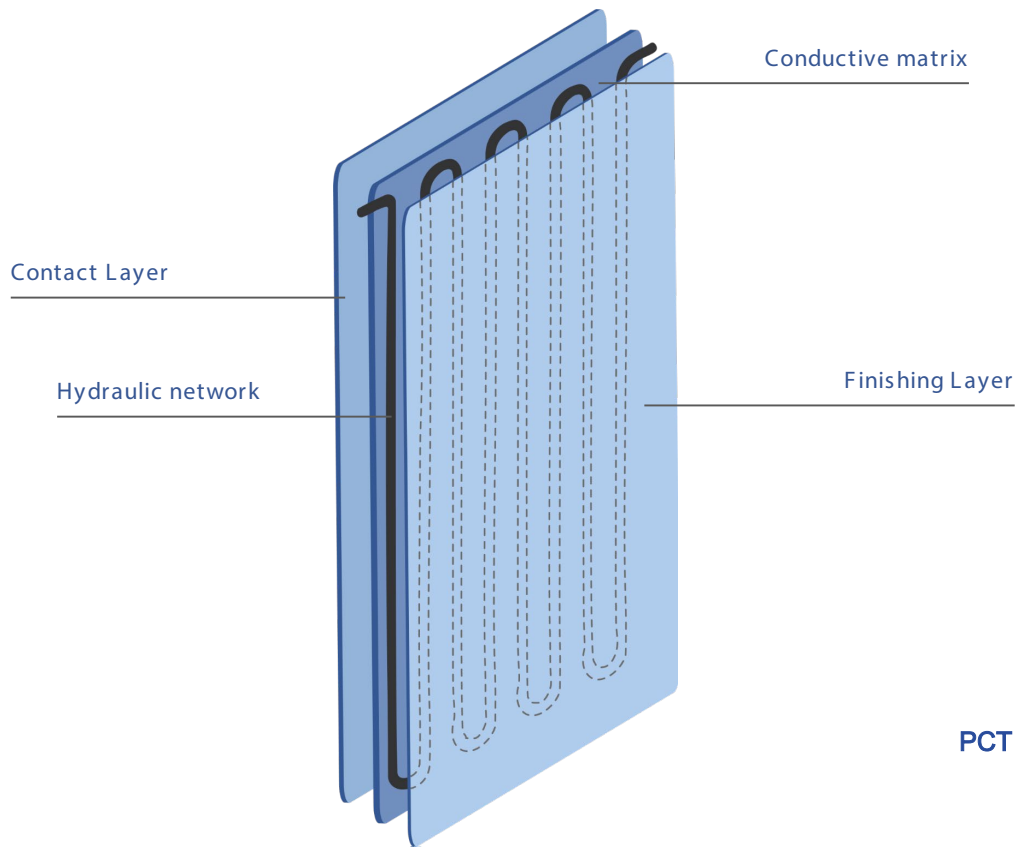
Our award winning technology simplifies, diversifies and enlarges access to renewable thermal energy in our cities.



Enerdrape is a cleantech spin-off from Ecole Polytechnique Fédérale de Lausanne, Switzerland.



We act towards climate action by providing efficient, renewable and responsible energy sources.



PCT 2020

The solar thermal panel of underground

Enerdrape leverages the first modular and scalable geothermal panel that allows to capture renewable thermal energy in indoor underground environments.

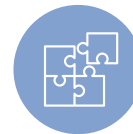
Our key features

Enerdrape technology allows to secure renewable heat sources for heat pumps.

We offer energy professionals and building owners, a low-carbon, cost-competitive and easy-to-install solution to save CO₂ emissions and increase the use of on-site renewables.



Retrofit -friendly
Quick installation
Minimal use of space



Modular
Scalable
Customizable

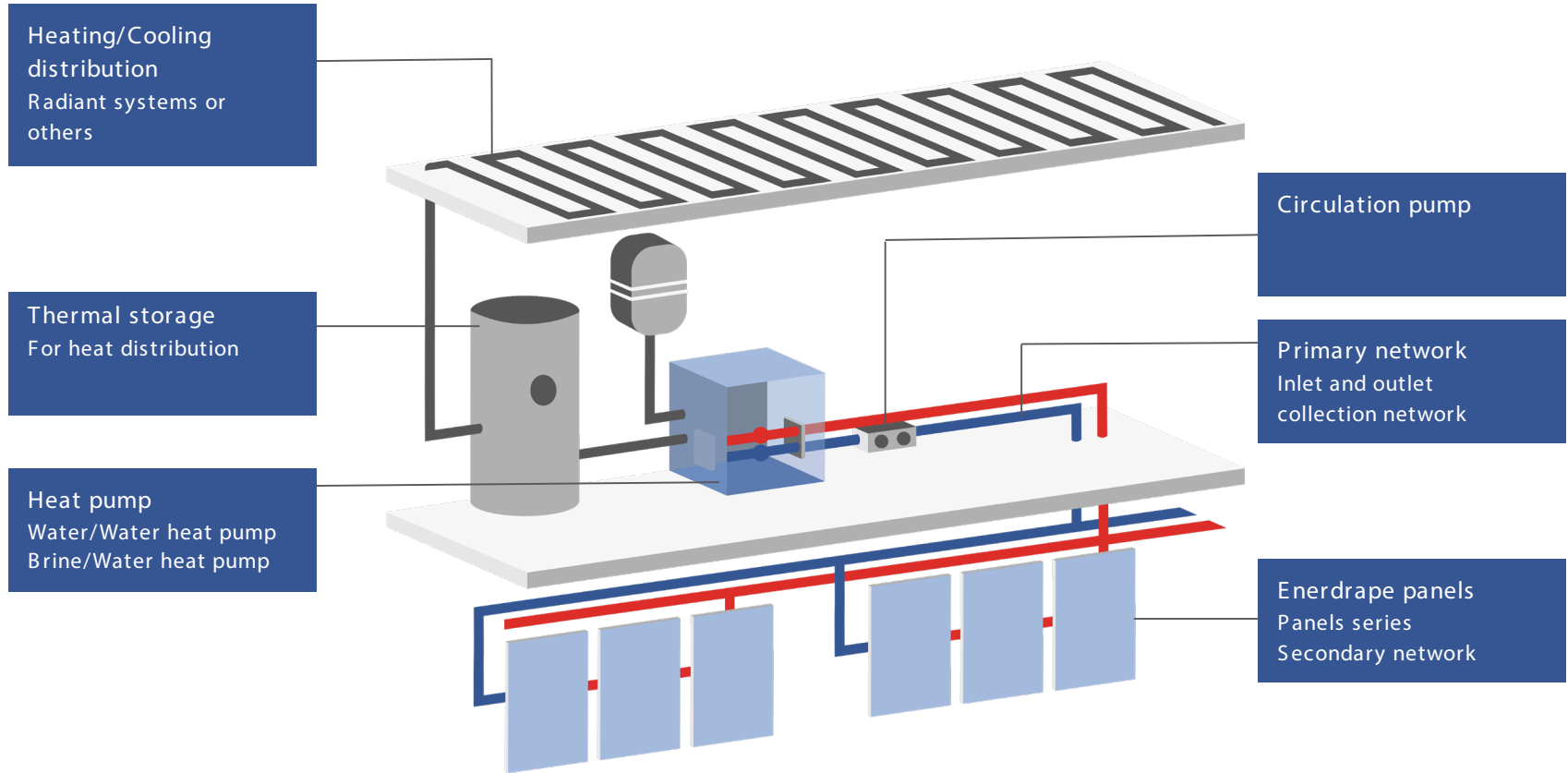


Increased efficiency
On site renewables



Up to - 80% direct CO₂
emissions

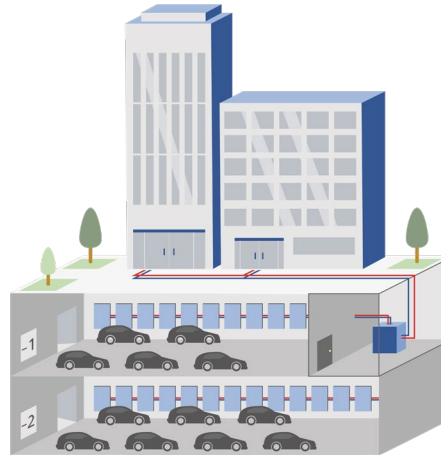
Solution principle



Use case 1

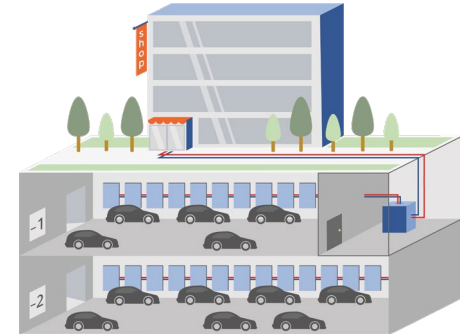
Enerdrape panel technology is installed on in-structure underground parking walls.

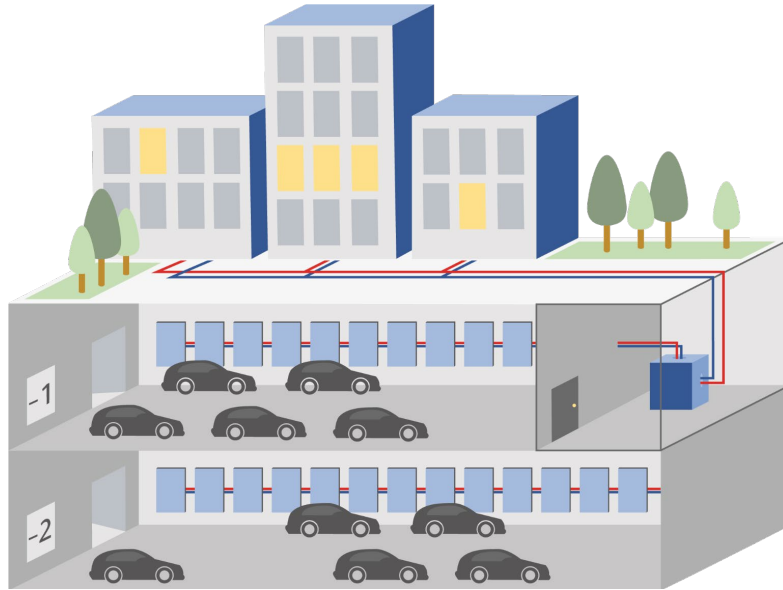
Thermal energy captured allows to supply renewable heating and cooling for buildings.



Renewable heat source for multi-residential assets

Renewable heat source for administrative & commercial assets





Thermal sources for network applications

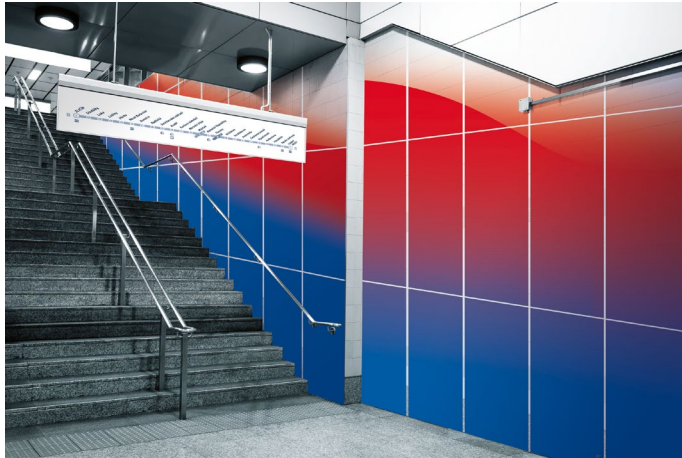
Use case 2

Enerdrape panel technology is installed on underground parking or other underground infrastructures and connected to district heating/cooling networks.

Example view



Other applications



Awards & Partners



BRIDGE

EPFL

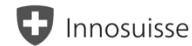


**ENABLED
BY DESIGN**

tech2impact



>>venture>>>>>>>>>>2021>>
FINALIST
 >>>>industrials&engineering>>



Supported by the federal Swiss
Innovation Promotion Agency

EPFL ■ Tech4Impact

INNOVAUD 



INNOSEED
ENAC

Contact

For any questions or additional information,
please contact us.

Margaux Peltier
CEO-FOUNDER

margaux@enerdrape.com
www.enerdrape.com

You can follow us on our networks or on our
website.

