



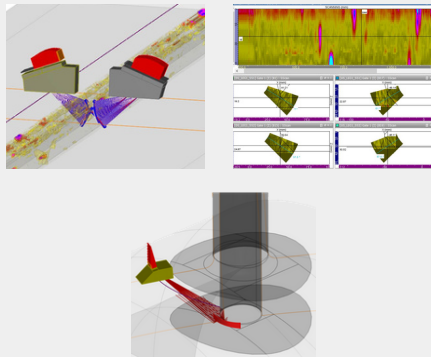
# INTACT

*We develop together the best technologies and best practices for inspections, monitoring and predictability of the health of industrial equipment*

## NDT INSPECTION



Provide tailor-made solutions to the most demanding NDT inspection needs, from the most recurrent inspections to the most advanced...



### INTACT contributes to your

- Process Safety & Reliability (PS&R)
- Efficiencies
- Environmental footprint



**HTHA**  
**Cracking**  
**CUI**  
**Corrosion**  
**Embrittlement**  
**Metal dusting**



## R&D WITH AIR LIQUIDE

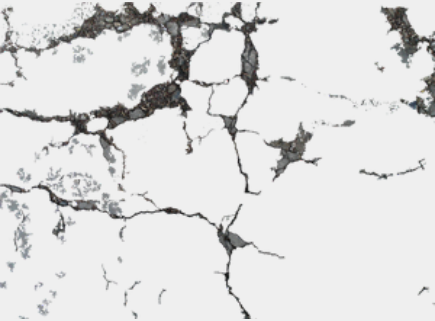
### NPR: PSA inspection without paint removal

Customized technology enabling inspection without the necessity to remove paint



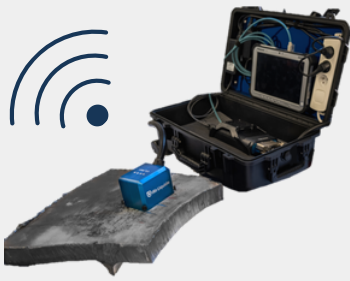
### HTHA Customized study

Specific equipment to enable earlier HTHA damaging detection. UT automated signal treatments



### Connected probe for evolving defects

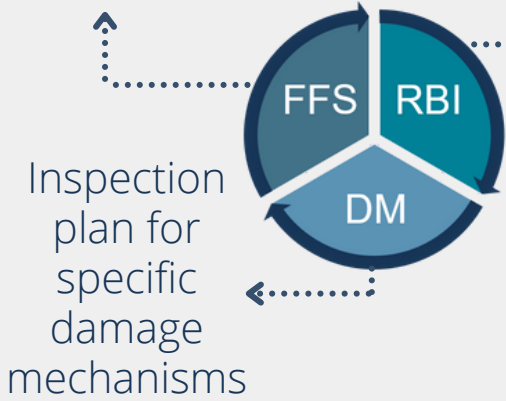
Probe deployed at location of interest enabling to detect and monitor evolutive cracks from remote locations



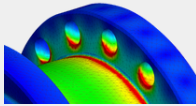
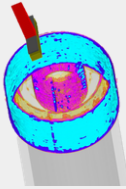
## MECHANICAL INTEGRITY



Fitness For Service



Risk based inspection through PCMS software



### Relying on two pillars:

- Calculation and simulation software
- In-depth knowledge of numerous codes and standards applicable to your equipment

## THESE AL SITES HAVE APPEALED TO US



## HEADQUARTER



contact@intactintegrity.com



+33 9 81 80 30 79



14 Avenue Carnot 91300 Massy, France

[www.intactintegrity.com](http://www.intactintegrity.com)