



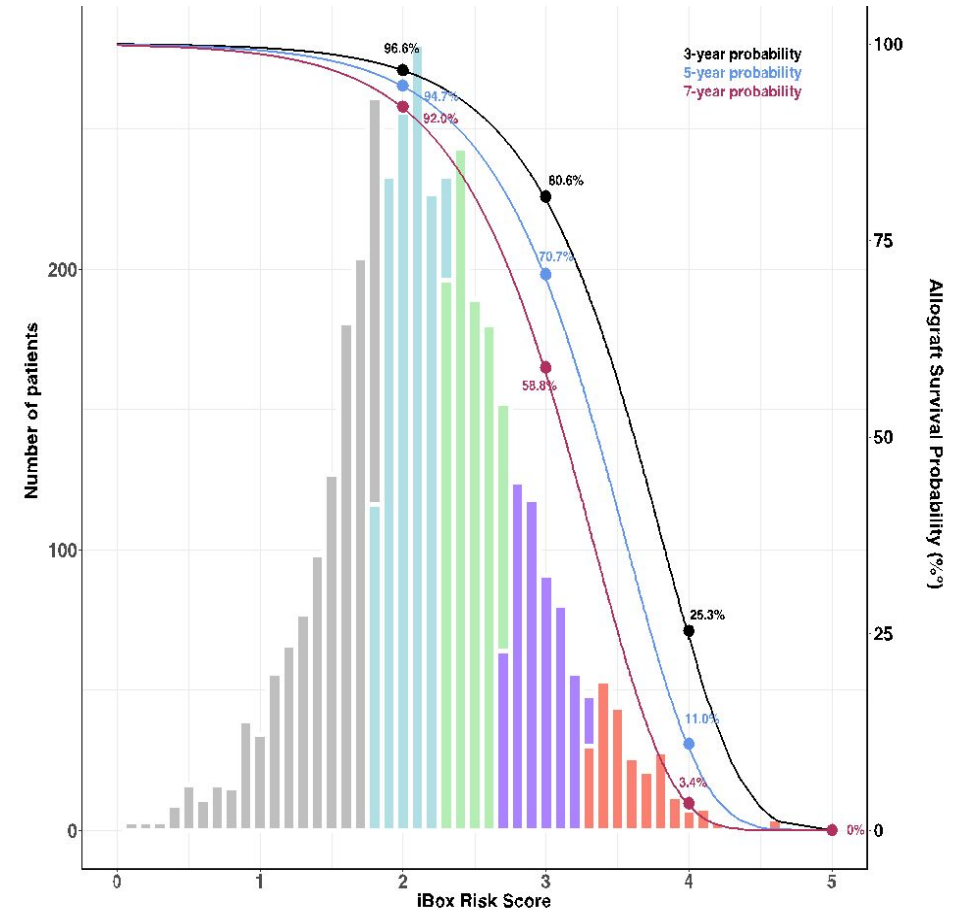
Predigraft - iBox system

Better prognosis for better treatment



iBox: Predicting Patient Risk of Graft Failure

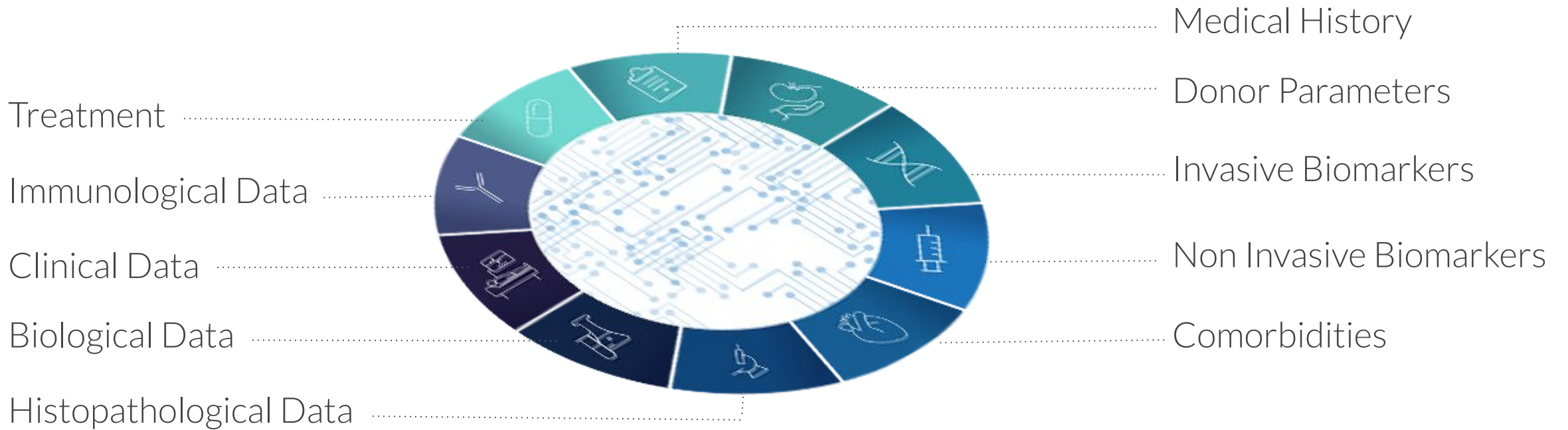
- Time from transplant to risk evaluation
- eGFR (mL/min/1.73 m²)
- Proteinuria / creatininuria (log)
- DSA: Anti-HLA donor-specific antibody MFI
- Biopsy:
 - Interstitial fibrosis/Tubular atrophy (IFTA)
 - Microcirculation inflammation (g+ptc)
 - Interstitial inflammation tubulitis (i+t)
 - Transplant Glomerulopathy (cg)



C STAT = 0.81 (0.79 - 0.83)

ClinicalTrials.gov Identifier: NCT03474003

Developed using a Unique Database



6000+ patients 15+ years of follow up

International Recognition



Worldwide validation
on 18 centers data



CE marking under
the MDR UE 2017/45



EUROPEAN MEDICINES AGENCY
SCIENCE MEDICINES HEALTH

Process of qualification as a
surrogate endpoint



The European Society
for Organ Transplantation

Endorsed by Societies

Several Algorithms available

Functional iBox: Time from transplant + eGFR (mL/Min/1.73m²) + Proteinuria (g/g)

Full iBox: Functional + Immunological (DSA MFI)+ Histology (Banff grades: g,i,t,ptc,cg,IFTA)

Several intermediary iBox:

- Functional + DSA Binary
- Functional + Histology diagnosis
- Functional + DSA Binary + Histology diagnosis
- Functional + DSA Binary + Histology Banff
- Functional + DSA MFI
- Functional + Histology Banff
- Functional + DSA MFI + Histology diagnosis
- Functional + DSA MFI + Histology Banff



PREDIGRAFT iBox System – SaaS interface



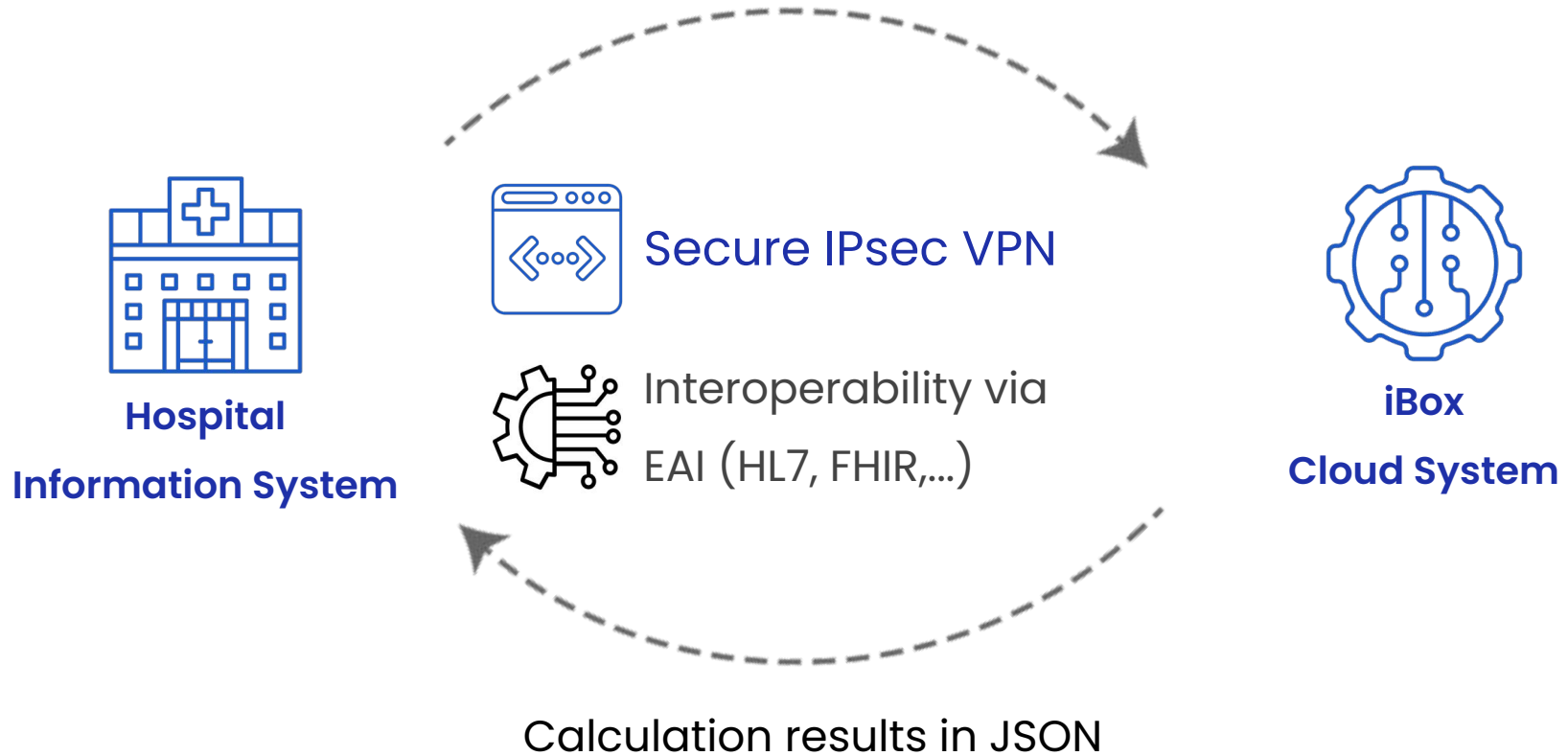
Predictive software

- Dynamic allograft survival probabilities for clinical follow-up
- Advanced risk stratification
- Response to therapy
- Surrogate endpoint for clinical research



PREDIGRAFT iBox System – Cloud API

Calculation requests through REST API



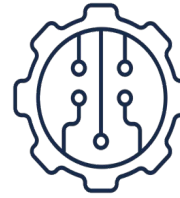
iBox System – integration

API connexion option



3 steps procedure

1. We send you the API references
2. We provide you the API key (token)
– in a separate message
3. You connect the API



Production ready API endpoint

- Can be used by your team to test your application
- With real or test data
- Integration recommendations and compliance



The API

- Follows standard REST API principles
- Returns responses as JSON data
- Keys are used to authenticate requests to the API
- Uses standard HTTP status codes



Interface recommendations

- Best practices
- Validated usability
- Work sessions

iBox System - integration

EAI connexion option

Steps	Actions	Skills required	IT team profiles
Gather information	<ul style="list-style-type: none">• Mapping of the Information System (IS)• identification of the softwares to connect	<ul style="list-style-type: none">- Overall knowledge of the IS composition and organization	<ul style="list-style-type: none">• IS director• IT architect
Define the workflow	<ul style="list-style-type: none">• Mapping data and messages samples• Define workflows and Select matching profiles and Cibiltech API	<ul style="list-style-type: none">- Softwares settings.- Interoperability know how : connectivity between on premise and SaaS solution, messages and API structure and connectivity	<ul style="list-style-type: none">• Head of interoperability• IT team - software• IT team - infrastructure• (Software vendor)
Implementation and testing	<ul style="list-style-type: none">• Setup the data workflows between testing environments• Run technical and functional testing• Push and open the workflows on production	<ul style="list-style-type: none">- Software settings- Testing know how : design of test plan, running test, test result exploitation	<ul style="list-style-type: none">• IT team - software• IT team - infrastructure• (Software vendor)

iBox System - integration

API security



REST API

API follows standard REST API principles

API returns responses as JSON data



Authentication

API keys are used to authenticate requests to the API

Access token



Errors Management

API uses standard HTTP status codes

Error requests return message and more detailed information



Security

Secured data health dedicated hosting solution

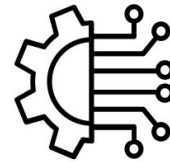
iBox System – integration

How we can help your teams



Procedure and documentation

Functional and technical documentation



Standardised connectors

REST API or EAI data exchange

Compatible with interoperability standards (HL7, IHE, FHIR)



Clinical support

Skilled scientists and clinicians

Chatbot, FAQ and email support



technical Support

Support team available 5/7

Chatbot, FAQ and email support

Contact

Stephane Tholander, CEO

stephane@cibiltech.com

+33 672 515 907



cibiltech.com



[linkedin.com/company/cibiltech](https://www.linkedin.com/company/cibiltech)



twitter.com/cibiltech