

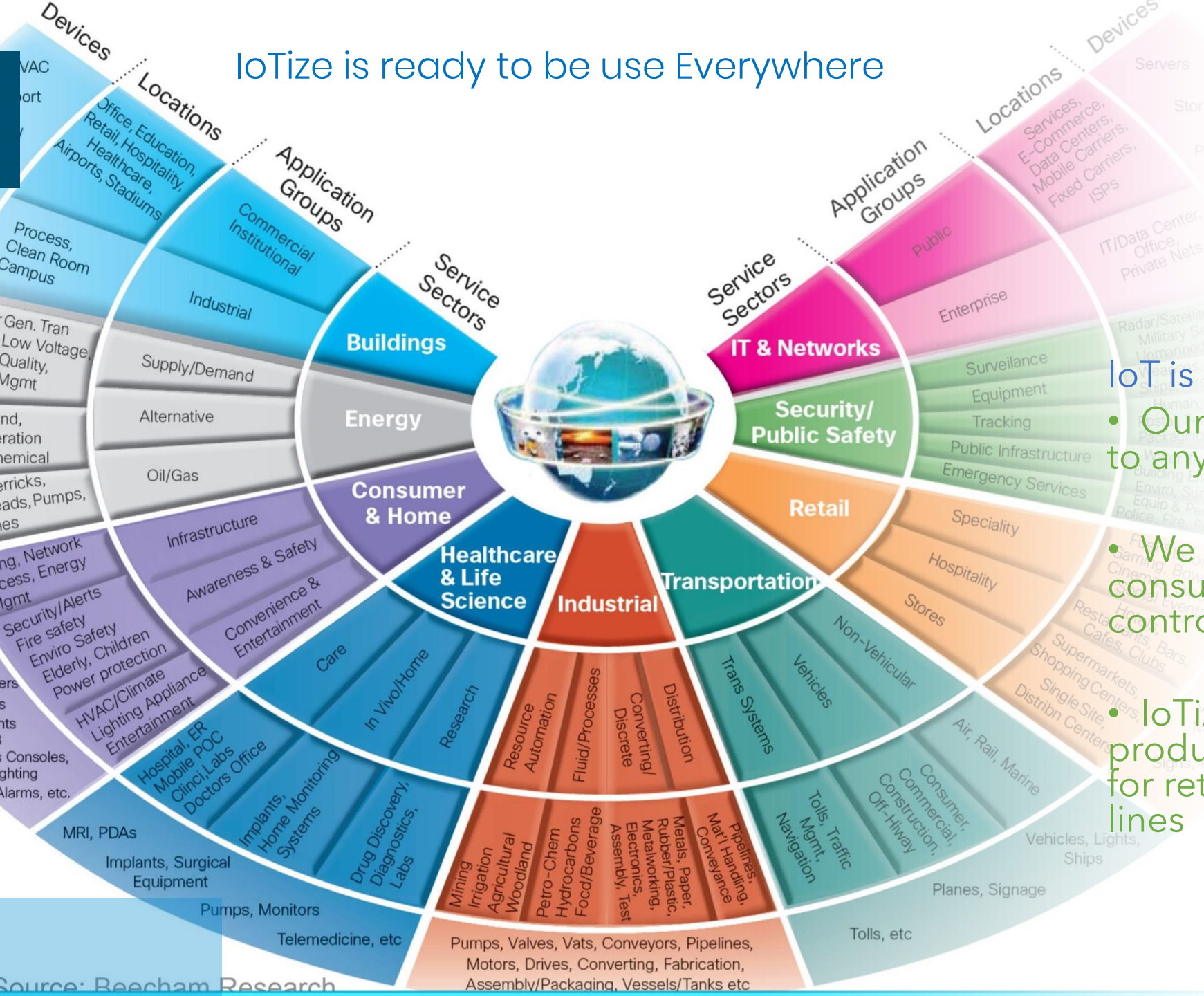
The background features a hand holding a tablet. A network diagram of interconnected nodes and lines is overlaid on the scene, with a portion of it appearing to be held or supported by the hand. The text 'iotize' is prominently displayed in the center, with 'iot' in a stylized lowercase font and 'ize' in a lowercase sans-serif font. A trademark symbol (TM) is located to the upper right of the 'ize' portion.

iotize™

Verbalizing IoT

Every second—127 new IoT devices are connected to the web.

IoTize is ready to be use Everywhere



IoT is Everywhere

- Our offer is easily adaptable to any electronic device
- We can be anywhere from consumer appliances to access control
- IoTize not only works for new product developments but also for retrofitting existing product lines

Our lives revolve around the cell phone



TapNLink: Plug'n Play Solution for Manufacturers

We eliminate the complexity of IoTizing a product

**Without TapNLink:
Multi-expert team, long development & high risk.**

Hardware 01

01 Only 2 wires (GPIOs)

Firmware 02

02 Configure only

Radio/antennas 03

03 Embedded antennas

Security 04

04 Configure only

**With TapNLink:
Ready-to-use solution.**

TapNLink: Plug'n Play Solution for Manufacturers

We eliminate the complexity of IoTizing a product

Without TapNLink: Multi-expert team, long development & high risk.

Certification 05

05 RED precertified FCC/IC ok

Mobile Apps 06

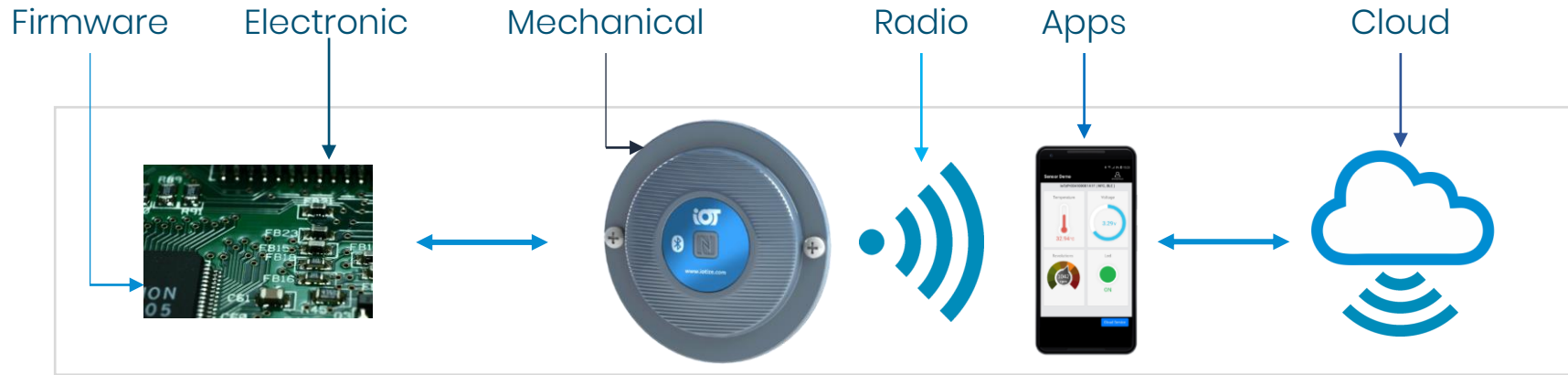
06 Automatic generation

Cloud 07

07 Configure only

With TapNLink: Ready-to-use solution.

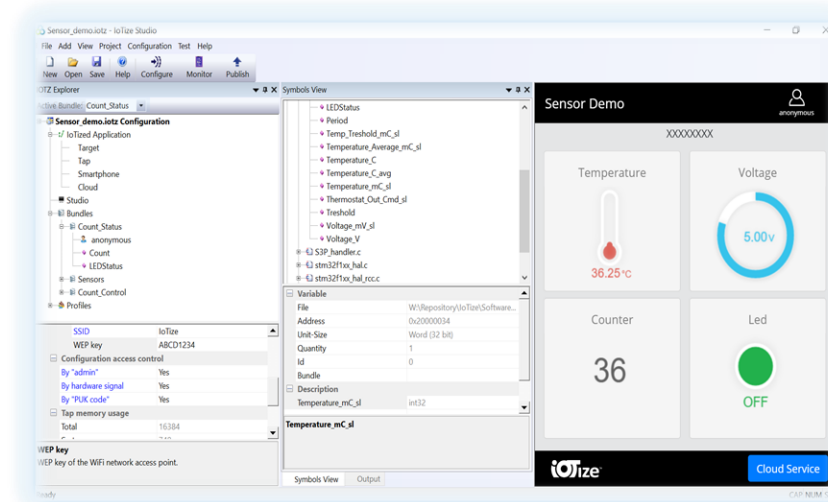
Manages All Aspects: What Does this Mean?



- No programming
- Fits any microcontroller
- Secure firmware updates

- Standard connectors
- Only two signals
- Low energy consumption

- Size optimization
- Optional casing
- Customizable



- Integrated antennas
- End-to-end security
- Certification

- Automatic app generator
- Access control management
- APIs for iOS, Android, Win10, ...

- Cyber-security
- MQTT
- Open source solution

Automatic APK/IPA generator

The screenshot shows the IoTize Studio interface. On the left, the 'Configure' panel is active, showing a tree view of bundles and settings. A blue arrow points from the text 'Configure' to the 'Configure' button. Below it, another blue arrow points from the text 'then click' to the 'Generate App' button. A third blue arrow points from the text 'and test!' to the 'Test' button. The right side of the interface shows the 'Resource View' and 'Output' panels. The 'Output' panel displays the compilation log, including the text 'Compiled successfully' and 'Connected to the TAP.' A blue arrow points from the 'Output' panel to the text 'and test!'.

- Three versions:
- 1 APP One Device
 - Static 1 App 3 Devices
 - Dynamic 1 App Multiple Devices



Innovations



Innovative Characteristics



Mastery of NFC

Intuitive app launcher

Automatic pairing for BLE / WiFi

Secure authentication

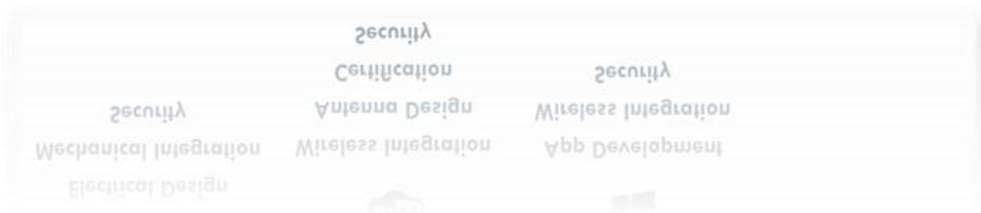
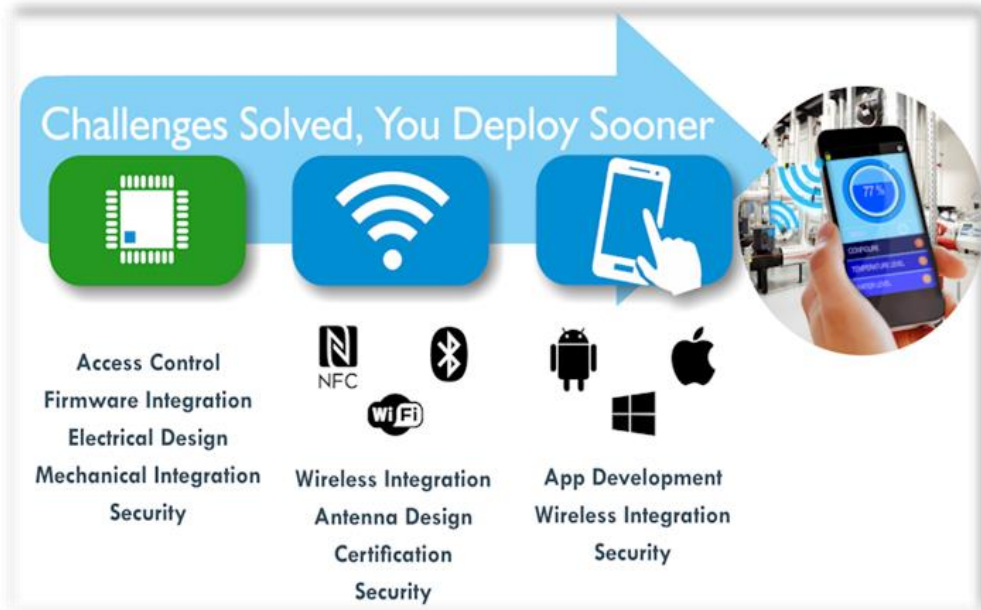
Low energy consumption

Reduced radio emissions

Low-cost solution

NFC-only: 3-stroke mode

Innovative Characteristics



END-to-END SOLUTION

Firmware Integration

Security

Simple Mechanical Integration

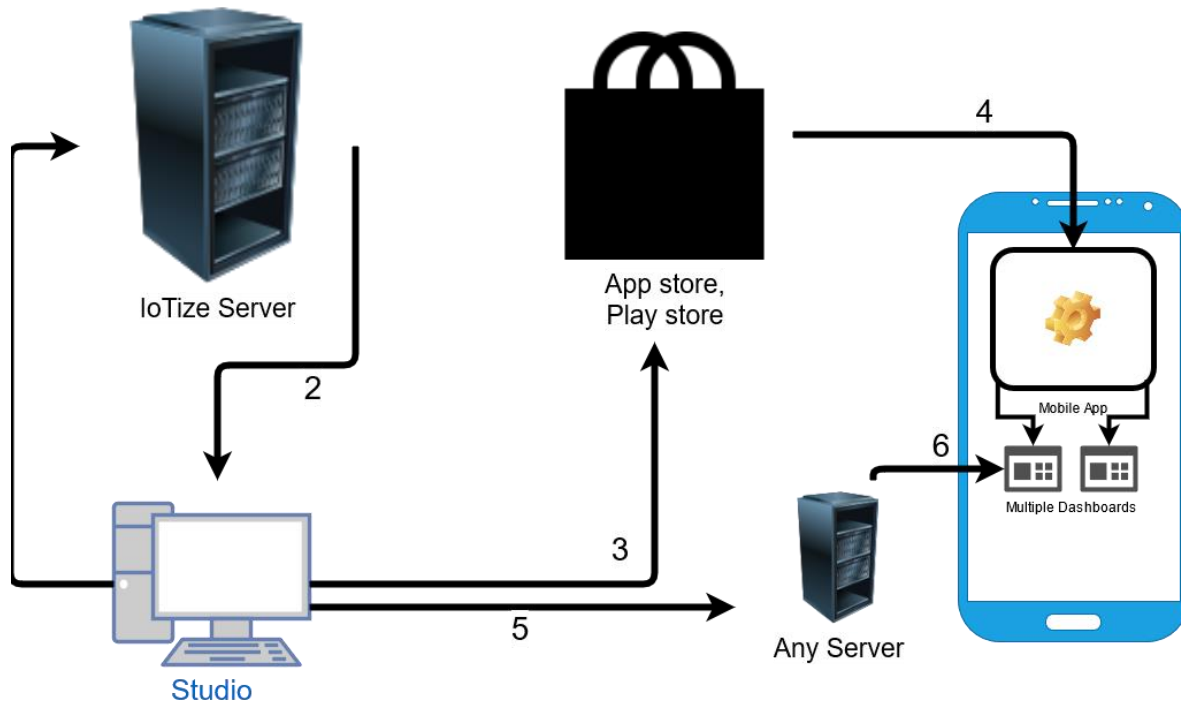
Secured Multi Channel Wireless Options

International Certifications

No Code Mobile Apps

Cloud connectivity + MQTT

A single App with dynamic dashboards



Valuable Innovations

- Men-years gains for R&D
- Shortens time-to-market
- Eliminates risks linked to complexity
- Enhances user experience
- Reinforces Security
- Reduces costs & environmental impacts



Heating System Example: How TapNLink's Are Used

3-stroke configuration

We offer unique solutions in the Market

Options

With NFC-only
With NFC+WiFi or NFC+BLE



STEP 01

Read settings
Tap-to-launch & pair

STEP 02



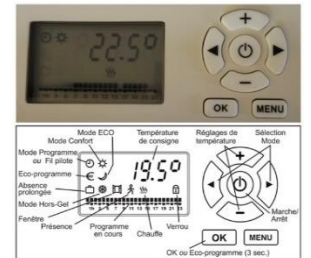
Edit settings
Edit settings



STEP 03

Save settings
Update remotely

Adios LCDs



Heating System Example: Enhanced User Experience!

We Improved UX

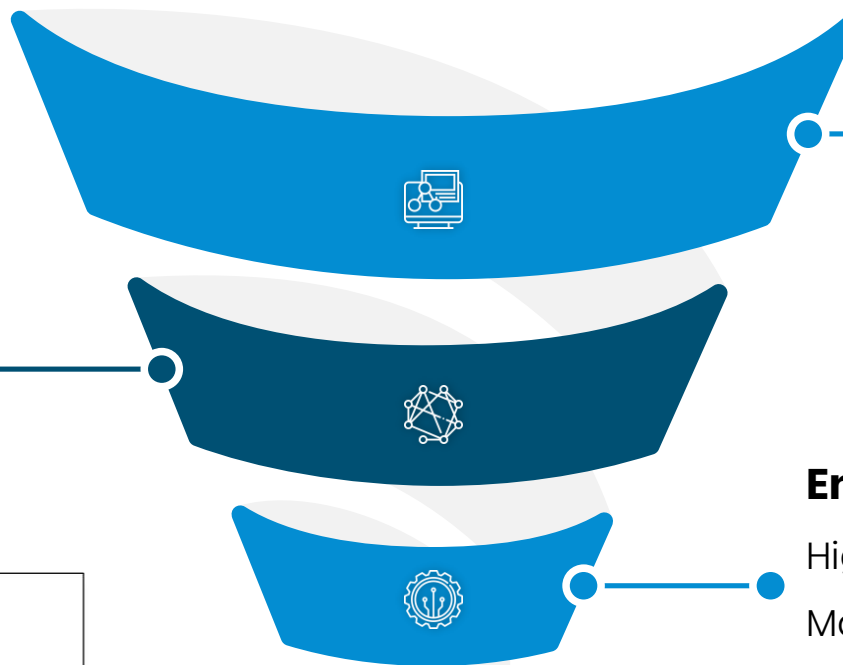
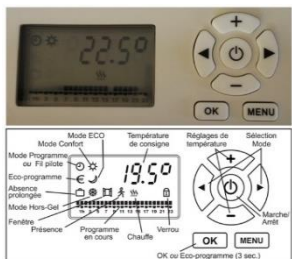
Efficiency

Only 20% of users configure their electric radiators.

Vs

Fast & easy to update.

Vs.



Ease/Comfort

Kneeling position & Complex sequences that require user's manual

Vs

User friendly mobile app

Environment & cost

High design cost.

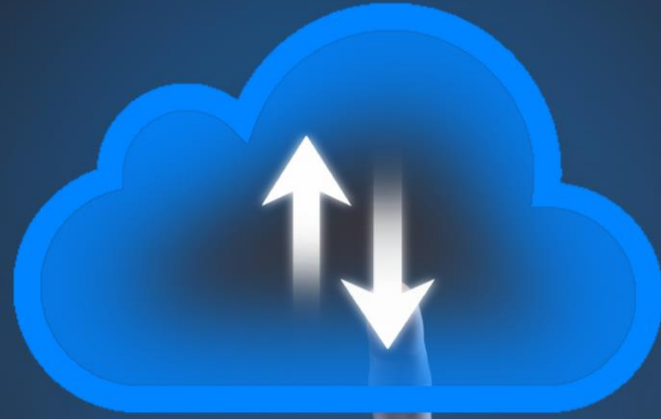
Many LCD/keypads rarely used.

Vs

Cost effective solution, easy to implement, dynamic data gathering Apps



Products that match
market requirements



Complementary Product Lines

TapNLink

- Connects to any microcontroller
- Radio variants: BLE / WiFi / LoRa
- Target connections: S3P / UART / SWD
- For new designs or retrofit

TapNPass

- Retrofit for wire fieldbus systems
- Interface RS-232, RS-485, USB serial
- Embeds TapNLink
- Fix or Nomad casing



Complete, Adaptable Offer



PLUG

- **SWD**
 - For Cortex-M MCUs
 - 5-minute PoC
 - Retrofit without modification
- **S3P**
 - Universal
 - Secure
 - Two GPIOs only
- **UART**
 - With or without Modbus
 - Legacy solution for industry
 - Requires a UART



GENERATE APP



- **HTML**
 - Automatic generation
 - Enabled by 'Tap Manager'
 - 5-minute solution
- **Ionic**
 - Automatic generation
 - Ready to publish
 - iOS / Android / Windows 10
- **APIs**
 - For existing apps
 - iOS, Android, Cordova
 - Connections & security communication



CONNECT



- **NFC-only (N)**
 - Ideal for configuration
 - Low-cost solution
 - 3-stroke configuration
 - Zero power consumption
- **NFC + BLE (B)**
 - Ideal for local sessions
 - Efficient combination with NFC
 - Low power solution
- **NFC + Wi-Fi (W)**
 - Access point or station modes
 - Alarm generation
 - Remote control via MQTT

Module Types



NFC-only

Ideal for configuration only

- Low-cost heaters
- Muted equipment: fridge,...
- Sensors
- Configured-once' devices

- Low cost
- Zero power

NFC + BLE

Ideal for local sessions with monitoring

- Replacement of PC by mobiles (protection relays)
- Possible remote control via a relaying mobile (gas boiler)

- App launch, pairing
- Cybersecurity
- Wakeup by NFC

NFC + Wi-Fi

Local + remote access (+alarms)

- High-end heaters,
- Existing Wi-Fi network (appliances)

- Network settings (SSID, ...)
- Launch, pairing
- Cybersecurity
- Wakeup by NFC

NFC + LoRa (+BLE)

Local + remote access (+alarms)

- Industrial plants
- Low Power

- Local HMI
- LoRa configuration

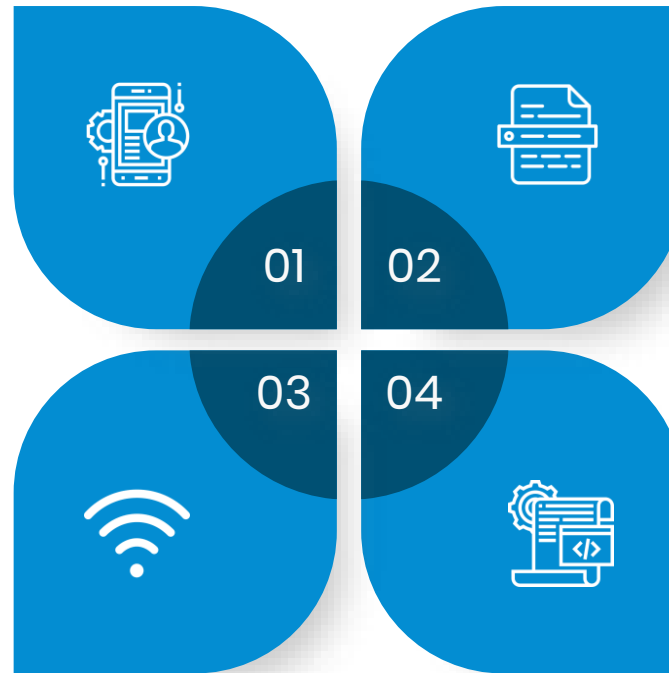
Advanced features

Automated mobile app generation

- Generates apps for iOS/Android/Windows.
- Local or on-line versions

TapNLink NFC/Wi-Fi with MQTT

- Remote sessions or single packets through MQTT
- Support the popular IoT platforms



Firmware update and remote debugging

- FW update for TapNLink.
- Target FW updates and debug capabilities (for STM32s),
- SVD files support.

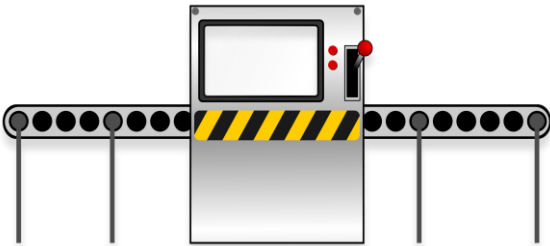
Embedded **Java Virtual Machine**

- Allow complex conditions for alarms
- Adapt variables formats to any MQTT platform

A Mass Market Solution

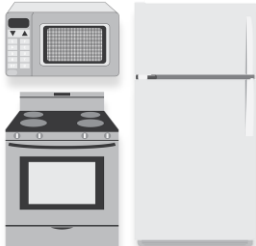


Generic Offer for Multiple Markets



Industry

machine tools,
process control, ...



Home

white goods,
entertainment,...



Smart building

HVAC, access
control,...

CLIENTS



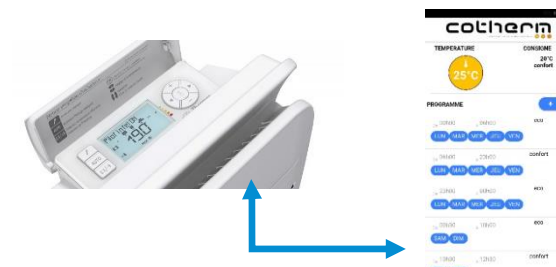
Air Liquide

Remote LoRa Interface
 AL proprietary protocol
 Local NFC/BLE control



Schneider Electric

TapNPass adaptation
 Versions 'Bluetooth/WiFi'



Cotherm

Replace LCD/keyboard
 NFC-only
 3-stroke configuration

International Recognition



Embedded World
Nuremberg
*Hardware innovation of
the year*



Salon Cartes
Cannes
IoT Solution of the year

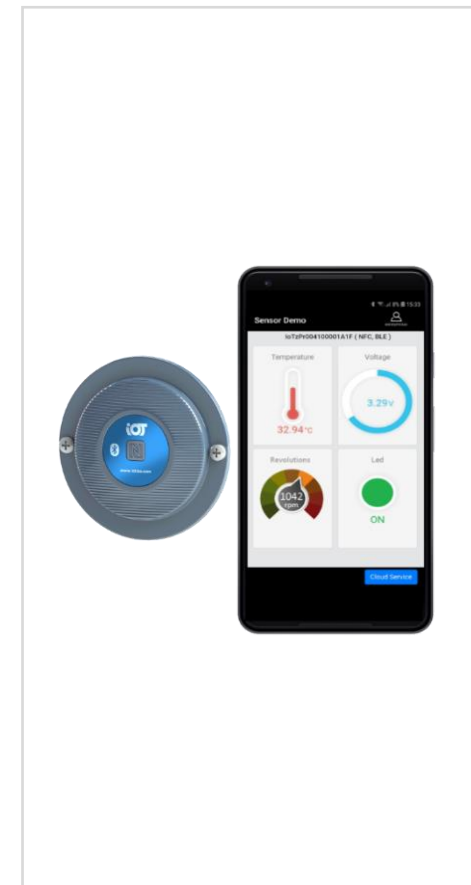


NFC Forum
2018 and 2020
*Best Emerging Concept
Best NFC application*



If your products look still as if they were manufactured last Century...

Perhaps we can help...



Today: NFC boom

- New apps for payment and transportation make NFC familiar
- Most Android devices now support NFC
- **September 2019 :**
 - 19/09: iOS13: IoTize products now on iPhone!
 - 24/09: Paris metro adopts NFC ticketing



Would you rather go through a long exhausting project with less than 15% chance of being successful, on time and on budget....

.....Or would you rather use or End-to-End IoT solution and save money, time and resources ?

