



# YUMAIN

## Head Office

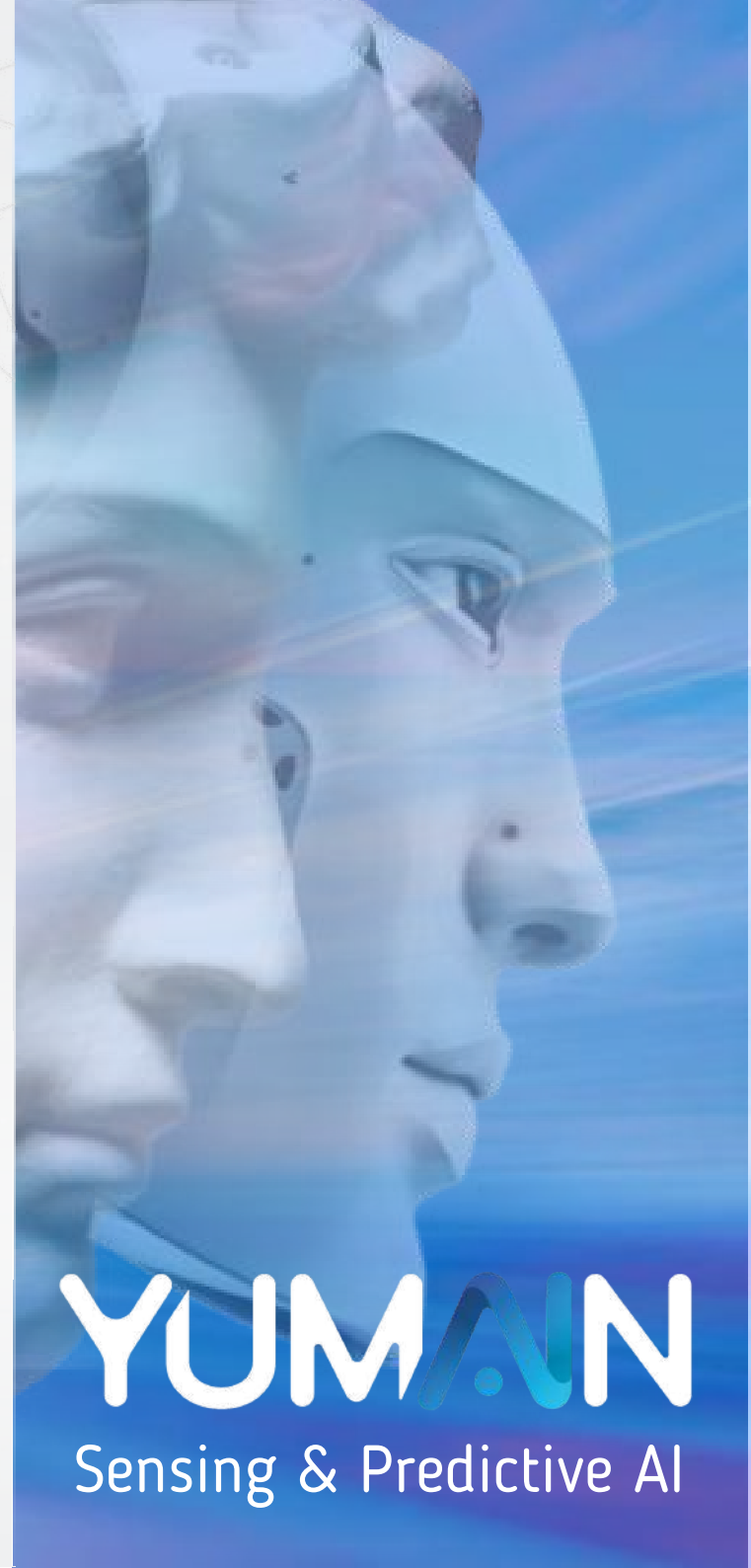
14H rue Pierre de Coubertin  
21 000 Dijon - France  
+33 380 371 795

## Commercial Agency

23 Paul Bert Street,  
92 100 Boulogne Billancourt -  
France  
+33 146 032 660

[www.yumain.fr](http://www.yumain.fr)

POWER TO ACT  
AND DETECT IN THE HEART  
OF YOUR EQUIPMENT  
AI VISION



# YUMAIN

Sensing & Predictive AI

# SMART RECOGNITION SOLUTIONS

## TO SUPPORT YOUR SAFETY AND YOUR PRODUCTIVITY

Yumain products are exclusive event detection systems based on image analysis by Artificial Intelligence. The efficiency, robustness and performance of "SMART RECOGNITION SOLUTIONS" are based on a solid trio of expertise: real-time signal processing, embedded artificial intelligence (edge-computing), and information acquisition in industrial environments.

Robust system

Multisensor solution

High level of detection

Embedded Artificial Intelligence

Retrofit of existing facilities possible

### Edge Computing System E.C.S

The ECS is an industrial camera that uses state-of-the-art technology, with built-in AI, so there is no need to connect to an external server or cloud-based system.



### Artificial Intelligence Server A.I.S

AIS is a rack-mounted detection system that is particularly suitable for retrofitting existing video surveillance installations.



## AVAILABLE SOLUTIONS



DETECTION OF PPE WEARING



PREVENTION OF PEDESTRIAN/VEHICLE COLLISIONS



PERIMETER PROTECTION OF GOODS AND PEOPLE



AUTOMATIC DETECTION AND ANALYSIS OF PANTOGRAPHS

## CAIMAN CAMERA BIO-INSPIRED INTELLIGENT CAMERA

**At the cutting edge of technology:** the Caiman camera provides an operational response for the detection and recognition of objects.

**Autonomous:** the Neuro Spikecamera does not need to be connected to the 4G network (cloud), the detection, processing and transmission of results are embedded.

**Innovative:** Thanks to the concept of spike neural networks inspired by the brain's functioning, the data processing embedded in the camera essentially concerns the salient information contained in the image. The amount of data to be processed is divided by ten compared to conventional solutions.



The Caiman camera is an intelligent, autonomous and low-power sensor based on a bio-inspired model. This camera, like the human eye, can detect and extract the relevant characteristics of the observed scene.

Detection principle:

- Image acquisition and processing in an FPGA module
- The image processing allows building the relevant information

Fonctions

- Detection and recognition of objects
- Trajectory analysis
- Camera of resolution 1920x1080 pixel
- Acquisition frequency of 50 fps
- User API provided

Benutzer API:

- OS: Windows 10/ Ubuntu 18.04
- Video streaming viewer
- Data acquisition and backup
- Camera configuration (Optical settings, Acquisition speed ...)

Features Caiman Camera

- Optics: C/CS Mount
- Communication: Gigabit Ethernet connection available
- Power Supply RJ45
- Weight: 230g