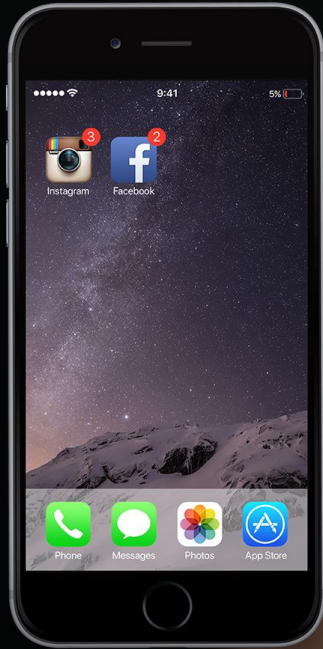


naki

# Naki Power



2015



Phones are  
taking an  
increasing part  
of people's  
daily lives.

Today





**We are the most  
accessible mobile  
charging network  
in Europe.**

1

Scan the  
station.



2

Charge  
on-the-go!



# Countries we operate in

Since **JAN 2020**

# 5

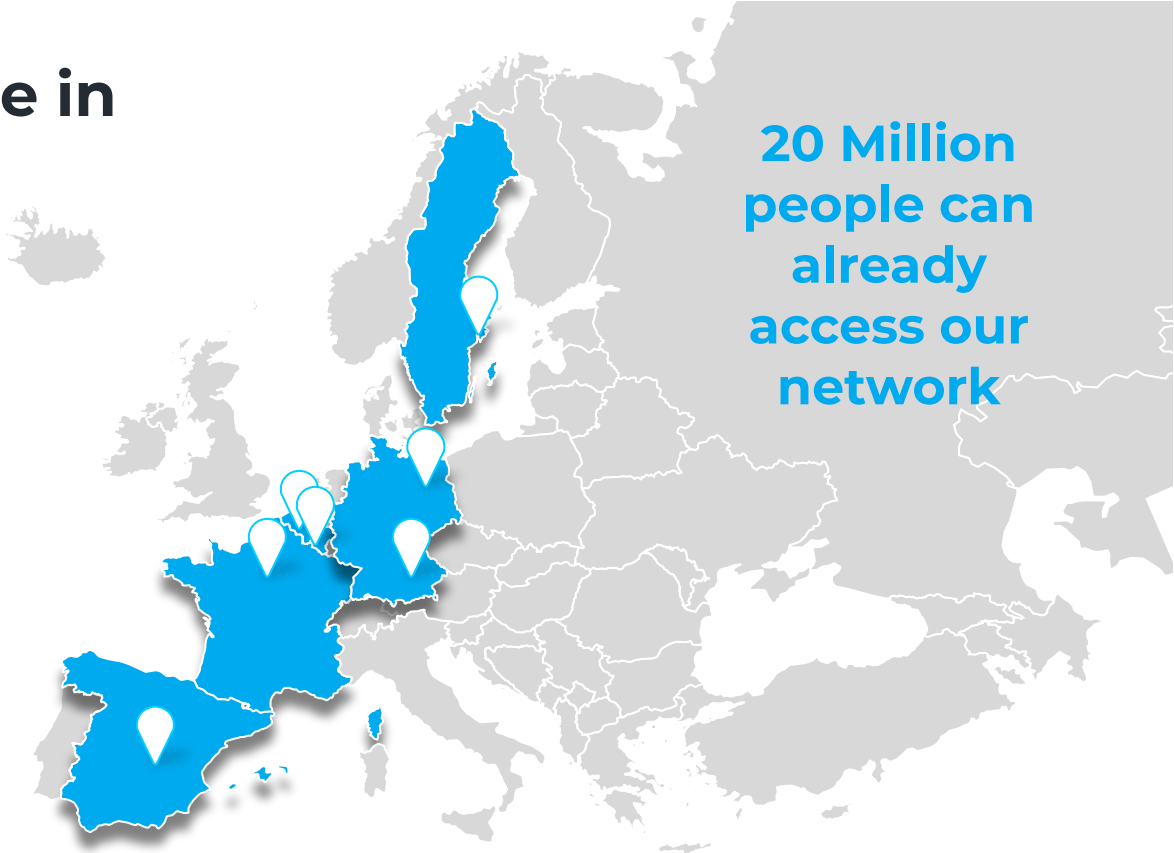
## COUNTRIES

Belgium  
France  
Germany  
Spain  
Sweden

# 8

## CITIES

Brussels • Ghent  
Antwerp  
Paris • Berlin  
Munich • Madrid  
Stockholm



**20 Million  
people can  
already  
access our  
network**

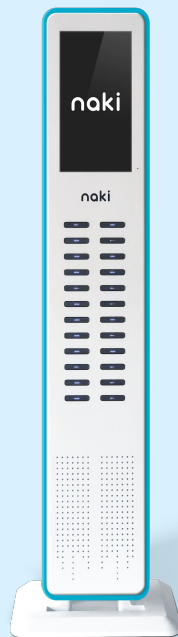


# Our 3 stations



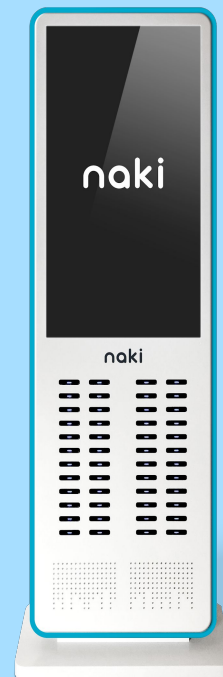
**8 slots**

19.8 cm (W) \* 36.2 cm (H) \* 21.5 cm (D)  
including top screen of **7 inches**



**24 slots**

33 cm (W) \* 165 cm (H) \* 22 cm (D)  
**Screen 16,6 inches**



**48 slots**

65 cm (W) \* 200 cm (H) \* 22 cm (D)  
**Screen 43 inches**

A close-up photograph of two women looking at a smartphone. The woman on the left is smiling and looking down at the phone. The woman on the right is also looking at the phone with a focused expression. The phone has a light blue case. The background is slightly blurred, showing more of the women's clothing and a hint of an indoor setting.

**We create a world  
where people:**

**Are free** from phone battery constraints.

**Can easily charge** their electronic devices on-the-go.

**No longer worry** about being cut off from their phones and essential apps.

naki

**THANKS**