



TeleCense



Our Mission

We help Companies, Authorities, International Organizations and Labs to assess and anticipate population growth and migration in emerging countries



TeleCense

Satellite data and demographic expertise
to help you take the best decisions

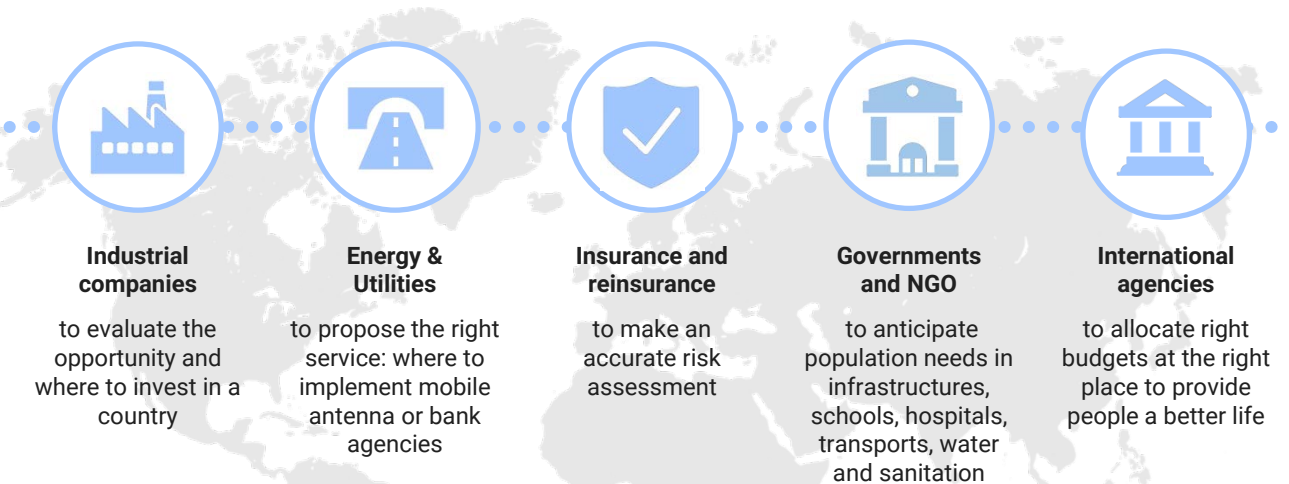
Population growth and moving in emerging countries is one of the major issues that humankind has to face in a very next future. Classical solutions: censuses and civil registration are inefficient and outdated, every ten years at best.

TeleCense evaluates population distribution and trends with efficient, up-to-date and accurate results, at low cost compared to in-situ studies or census campaigns.

Copernicus data is the core input of the TeleCense service: by leveraging Sentinel-1&2 satellite images and merging radar and optical data, we can provide high accuracy in detecting settlements.

Knowing where people live is a fundamental element of many decision making processes such as urban development, infectious disease containment, evacuation planning, risk management, conservation planning, and more.

TeleCense could be used by:



Moreover, TeleCense is designed for use in connection with **climate impacts, human crisis management, public health, migration**, and more.

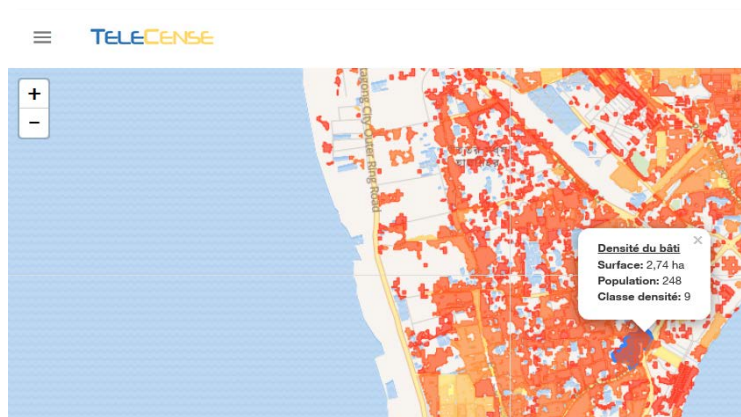
sobloo

TeleCense is a Web Service, hosted by sobloo, providing geo-localized population estimations using Copernicus satellite images.

Contact us

+33 4 42 69 09 93
Espace Beauville, Bat. B
4 rue Mahatma Gandhi
F-13090 Aix-en-Provence

How it works?



On a geographic or administrative area, TeleCense services provide:

- Settlement footprint & built-up characteristics
- Population estimations
- Regular updates
- Evolution trends

Previous demographic census data are not required.

Three levels of service

Standard

Standard TeleCense services answer the use case (built areas, population estimation & density, a first wealth estimation): limited cost, fully automated

Enriched

Standard TeleCense service plus add-on services: photo interpretation by experts, third party data (GIS, UN population data), long term trends

Premium

On top of the TeleCense Standard services, extra high end service with third party partners to increase value to customer (Ex: WorldDEM, OneAtlas by Airbus, VHR Visible / Radar, Flux Vision by Orange Business Services)

Annual subscription includes 2 updates

Additional services

We rely on a strong partnership ecosystem to bring you additional services.

- Data from demographic studies (ex: average household composition)
- Mobiles flows (Flux Vision by Orange Business Services)
- WorldDEM Elevation Model (Airbus)
- Photo interpretation to go further on habitat characterization
- Basic geological data (reliefs, watershed)
- GIS data Localization of communication hubs (roads, railway, airports, ports, etc.)
- Higher resolutions results by using Pleiades, SPOT & TerraSAR-X images from OneAtlas (Airbus)
- External data from the client (ex: localization of Point of Sales)

Find the answer to all your needs:

- 1 **Forecast the population**, the evolution / movement of the population over years in order **to implement sustainable / sufficient capabilities** (ex: set-up antennas in highly populated districts, set-up bigger tubes)
- 2 **Estimate the cost of deployment** (number of connections needed, distance, etc.) correlated with the population I am covering
- 3 Choose the best location to implement industrial facility and limit impact on population
- 4 Make a **risk assessment / insurance fees / pricing estimation on industrial risks**
- 5 Verify **how pertinent the infrastructure is, compare to the population** that is going to be addressed
- 6 Prevent virus propagation, make a vaccination campaign, identify preventive health actions
- 7 **Optimize and accelerate the preparation of a Census** in my country or use TeleCense data during the post-census validation
- 8 Know **how impacted I am (people and infrastructure) after a natural / industrial disaster** in order to: 1. unlock funds, 2. announce how impacted I am to financial markets



Experiment
TeleCense in case
of water elevation

About us

- Created towards the end of 2016
- Winner of the "Young Innovative company label"
- Winner of the 2nd innovation contest, funded by BPI
- Orange Business Services Cloud Starter partner
- Member of the Safe Cluster
- Member of Connect by CNES
- Incubated within the European Space Agency



TeleCense

<http://www.telecense.com/>

Our partners



business incubation centre
Sud France



bpi**france**



Business
Services



LE GRAND PLAN
D'INVESTISSEMENT

